

Profile and Capability Statement

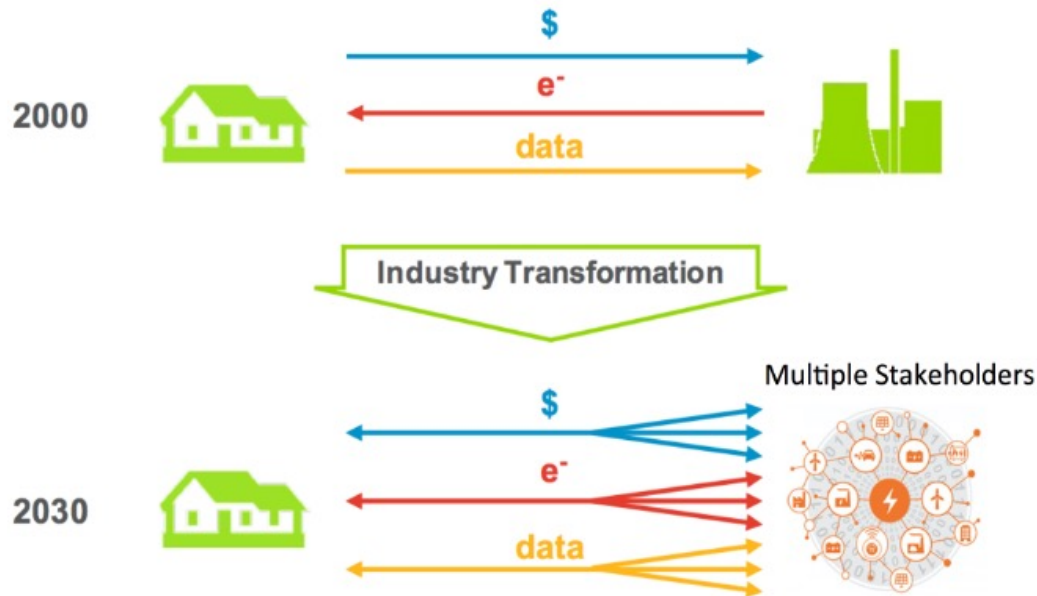
PO Box 771, Gurabo, PR 00778
info@marathonpr.net



About



- **Marathon, LLC** is the new name for TNET Holdings 1, LLC, a Special Purpose Acquisitions Company created in 2019 for acquiring-merging-expanding utility contractor companies and assets, under new highly experienced, innovative, and transformative management, to successfully participate and achieve Puerto Rico's electrical industry re-development and transformation.



Smart Public Lighting

Distribution Automation

Broadband Communications

Smart Water and Power Metering

Lines, Substations and Switchyards



Vision



- To provide reliable, safe, sustainable, smart and connected Transmission, Distribution, Lighting and Communications solutions to ensure the reliable, automated, safe and smart delivery of electric power to communities

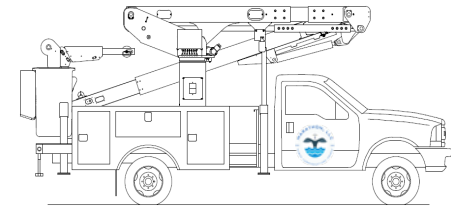
Values



- Innovation
- Health and Safety
- Accountability and Responsibility
- Commitment towards Stakeholders
- Equality, Diversity, Integrity & Respect
- Client, Consumer and Prosumer Satisfaction



Mission



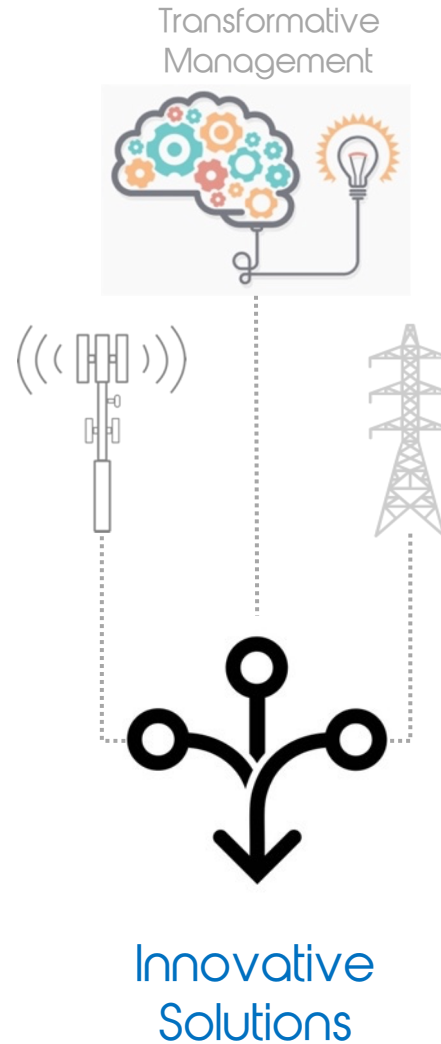
- Partner to build a safe, reliable, resilient and sustainable smart electrical grid through innovative solutions for the benefit of communities



Capabilities

- Telecommunications

Marathon has a wealth of experience in engineering, procurement and construction (EPC) and emergency response for antenna, optical fiber, and copper cabling solutions to ensure stable broadband for voice, data and video communications; Overhead or underground, in steel, aluminum, concrete or wood structures.

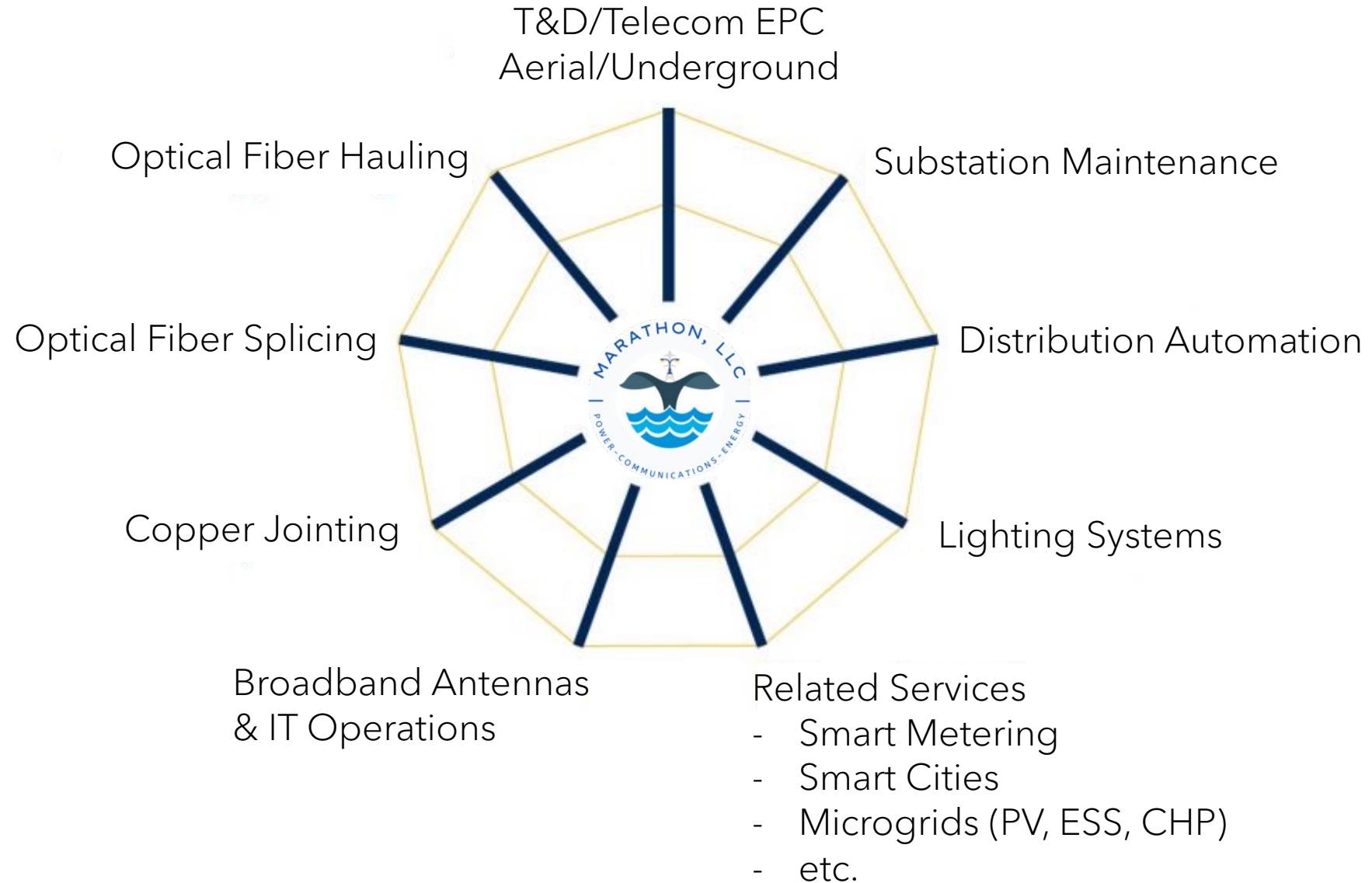


- Electrical

Marathon has extensive EPC and emergency response experience in public/private, outdoor/indoor, smart lighting systems, distribution service drop-offs, overhead and underground power lines, substations and switchyards, switchyard maintenance, distribution automation, and EV charging stations.

Our benchmark of excellence and diverse range makes **Marathon** a reputable organization in the telecom and electric power industries.

Services



Services

- Optical Fiber Splicing

Marathon utilizes its own in-house optical fiber splicing team. It can undertake fusion and/or mechanical splicing as well as complete testing services, such as end-to-end, OTDR testing, Insertion Loss testing and loop back testing. The company's experienced technicians can provide fault finding and repairs of optical fiber networks.

- Conventional and Smart Lighting Systems

From public lighting lamp replacements, to LED conversions, to full Public Lighting automation from smart LED lamps, including pole replacement/installation, aerial and underground wiring for power and grounding, telecomm, programming, monitoring and maintenance. **Marathon** also provides indoor smart lighting systems for office, commercial and industrial buildings. Marathon has successfully completed over \$21 million in streetlights repairs for LUMA under contract 94247, including pole removal/installations with secondary circuits.

Services

- **Optical Fiber Hauling**

Fiber-Optic cable hauling and install projects in the telecommunications industry is one of **Marathon's** many strengths. It has developed strong and enduring working relationships with several high-profile telecommunications companies and can handle all aspects of some of the largest fiber optic cable hauling projects. **Marathon** places a high importance on maintaining these relationships and achieving project completion to a high standard.

- **Distribution Service Drops**

Marathon's ASP accredited level 1 and 2 licensed electricians and lineman can provide primary and secondary service connections from pole, conduit or pipe to commercial and residential customers, including installation of conventional and smart electricity and water meters in accordance with the corresponding utility standards and best utility practices.



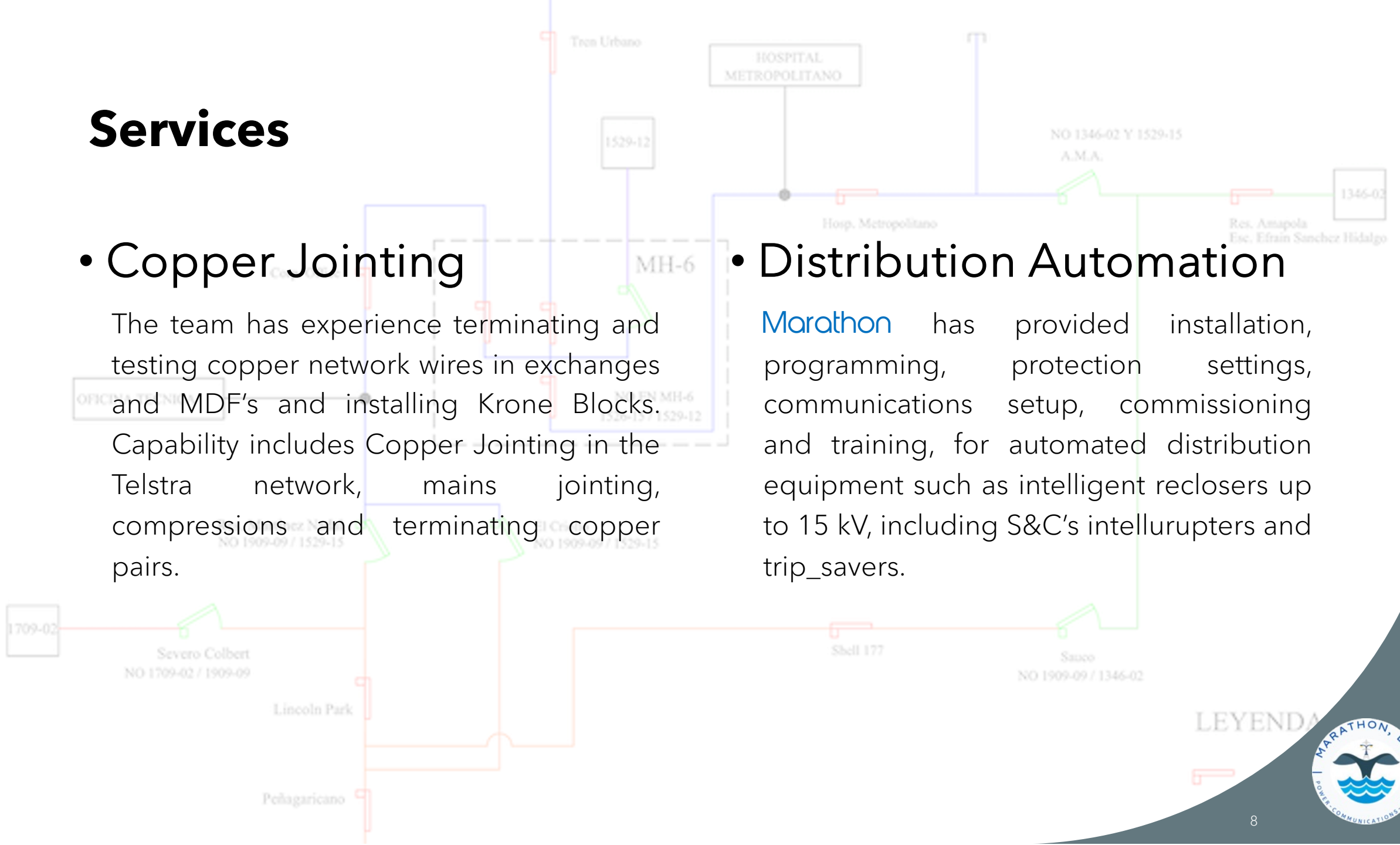
Services

• Copper Jointing

The team has experience terminating and testing copper network wires in exchanges and MDF's and installing Krone Blocks. Capability includes Copper Jointing in the Telstra network, mains jointing, compressions and terminating copper pairs.

• Distribution Automation

Marathon has provided installation, programming, protection settings, communications setup, commissioning and training, for automated distribution equipment such as intelligent reclosers up to 15 kV, including S&C's intellurupters and trip_savers.



Services

- **Broadband Antennas**

Installation of antennas for wireless internet and 5G broad band services with our NWSA certified Tower Crews

- **T&D EPC**

Engineering, procurement and construction services for aerial and underground distribution and transmission lines and substations and air and gas insulated switchyards up to 115kV. Marathon is successfully building a new GSU switchyard with a new 115kV aerial line including 115kV underground transitions for switchyard interconnection for the US Corps of Engineers under emergency contract from RG Engineering, Inc. for the interconnection of the FEMA funded 250 MW emergency gas turbines at San Juan Steam Plant.



Services

- Substation Maintenance

Marathon provides a variety of substation maintenance services including vegetation control, crushed-stone additions, control room repairs and painting, intelligent lighting, ground mat inspection and repairs, transformer pit visual monitoring, transformer pit automatic monitoring and automatic drainage valves, oil spill control and cleaning, oil and SF6 leak sealing, transformer and breaker oil condition monitoring, insulation testing and protective relaying testing and settings, among other services



Related Services

- Civil Construction, Pipe Laying, Pits, Bases & Manholes

Marathon provides a variety of civil works to a range of clients including pipe, trench, pit, conduit, manhole and pole base installations and maintenance for both new and existing telecom and power infrastructure in public areas including heritage areas, around tree roots and tree lines.

- Non-Destructive Excavation

Marathon's truck mounted vacuum unit transfers the excavation spoils directly into the spoils tank of the unit, creating no unsightly, unsafe and impractical piles of dirt in the work area. No machinery movement results in minimal ground disturbance to the site surroundings. Its excavation unit can also trench through and around heritage-listed and/or protected flora areas without damage to major root systems or unnecessary damage to lawns and plant life or existing

infrastructure with or without horizontal directional drilling (HDD).



HSE¹

Marathon's commitment to health, safety, and the environment (HSE) is an inseparable part of our organizational culture. HSE compliance is fundamental and non-negotiable, and it must guide all our actions and commitments. We demand safe work practices from every employee and safe decisions from the management team.

1. Marathon has adopted Repsol's safety policies which are based on the Institute for a Culture of Industrial Safety (ICSI), incorporating best practices in industry and consolidated models such as J. Reason.

- Seven Attributes of our HSE Culture Model



HSE¹



Marathon's assessment methodology also analyses the degree of maturity of the HSE Culture in the different facilities or business units through:

- Perception questionnaires
- Focus groups and interviews
- Documentary analysis
- On-site accompaniment

With the results obtained during these evaluations, we develop improvement plans, whose associated actions and the evaluation of their effectiveness contribute to continuous improvement.

At Marathon, we are committed to safety. We develop leadership in HSE through the practice and dissemination of basic behaviors in our activities.

- Assume individual responsibility for safety and the environment.
- Set a visible example of our commitment to S&E.
- Act with the firm conviction that all incidents are avoidable.
- Train people to act as leaders in S&E.
- Demonstrate and demand individual responsibility in S&E from all employees, systematizing positive and negative knowledge.
- Consider S&E as the first criterion in the decision-making process.
- Be proactive in systematically identifying all S&E risks, deficiencies, and opportunities for improvement.
- Immediately correct the deficiencies identified in S&E.



Risk Management



Marathon's aim is to provide greater certainty and confidence in the achievement of Company objectives to shareholders, customers, employees and other stakeholders, through the anticipation, management, and control, as far as practicable, of the risks to which the Group is exposed, with an overall vision.

Our Project Management approach and commitment to safety in all work activities prioritizes on planned and preemptive Risk Management and safety practices to minimize risks to workers, motorists, bicyclists, and pedestrians.

| Level | Descriptor | Description |
|-------|----------------|---|
| A | Almost certain | The event or hazard: • is expected to occur in most circumstances, • will probably occur with a frequency in excess of 10 times per year. |
| B | Likely | The event or hazard: • will probably occur in most circumstances, • will probably occur with a frequency of between 1 and 10 times per year. |
| C | Possible | The event or hazard: • might occur at some time, • will probably occur with a frequency of 0.1 to 1 times per year (i.e. once in 1 to 10 years). |
| D | Unlikely | The event or hazard: • could occur at some time, • will probably occur with a frequency of 0.01 to 0.1 times per year (i.e. once in 10 to 100 years). |
| E | Rare | The event or hazard: • may occur only in exceptional circumstances, • will probably occur with a frequency of less than 0.01 times per year (i.e. less than once in 100 years). |

The likelihood of an event or hazard occurring shall first be assessed over the duration of the activity (i.e. "period of exposure"). For risk assessment purposes the assessed likelihood shall then be proportioned for a "period of exposure" of one year

Example: An activity has a duration of 6 weeks (i.e. "period of exposure" = 6 weeks). The event or hazard being considered is assessed as likely to occur once every 20 times the activity occurs (i.e. likelihood or frequency = 1 event/20 times activity occurs = 0.05 times per activity). Assessed annual likelihood or frequency = 0.05 times per activity x 52 weeks/6 weeks = 0.4 times per year. Assessed likelihood = C (i.e. Possible)

QUALITATIVE RISK ANALYSIS MATRIX – RISK RATING

| Likelihood | Consequences | | | | |
|---------------------|--------------------|------------|---------------|------------|-------------------|
| | Insignificant 1 | Minor 2 | Moderate 3 | Major 4 | Catastrophic 5 |
| A (almost certain.) | M | H | H | E | E |
| B (Likely) | L | M | H | E | E |
| C (Moderate) | L | M | H | E | E |
| D (Unlikely) | L | L | M | H | E |
| E (Rare) | L | L | M | H | H |

MANAGEMENT APPROACH FOR RESIDUAL RISK

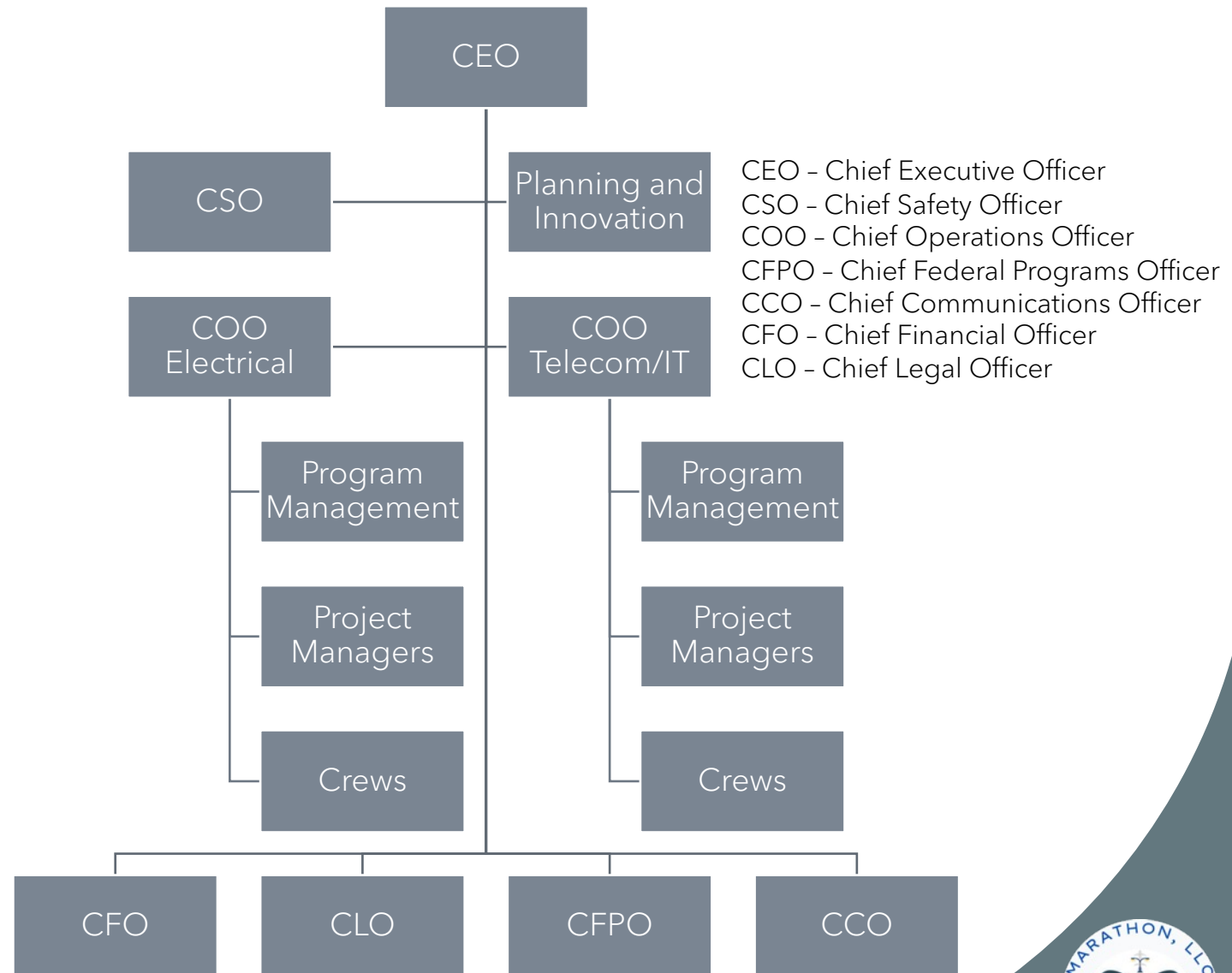
| Residual Risk Rating | Required Treatment |
|----------------------|---|
| E Extreme Risk | Unacceptable risk. HOLD POINT. Event cannot proceed until risk has been reduced. |
| H High Risk | High priority, the Safety officer and the appointed Traffic Manager must review the risk assessment and approve the treatment and endorse the TTC Plan prior to its implementation. |
| M Moderate Risk | Medium Risk, standard field TTC and event practices subject to review by accredited MUTCD field personnel prior to implementation |
| L Low Risk | Managed in accordance with the approved management procedures and traffic control practices. |

EXAMPLE: QUALITATIVE MEASURES OF CONSEQUENCE OR IMPACT IN JOBSITE TRAFFIC CONTROL



Organization

Marathon employs a highly specialized and experienced leadership team and staff. The company prides itself on meticulous NWSA & OSHA standards. It aims to ensure every employee goes home safely at the conclusion of each day; To that end, it focuses heavily on workplace safety, which can only be achieved by maintaining a safe worksite, ensuring the highest quality workmanship and maintaining the highest quality equipment on every single project. The leadership team is highly innovative and transformative, thus providing optimal solutions for today's challenges.



Community Involvement



- Marathon is a locally owned corporation. Marathon's key personnel are members of the community and are actively involved with the community and its stakeholders in pro-bono activities such as:
 - Counseling for college and HS students on Science, Technology, Engineering and Mathematics (STEM) degrees as well as electrical trade opportunities
 - Seminars and Conferences for groups such as CIAPR, PRECA, PR Manufacturers Association (PRMA), Asociación de Hospitales de Puerto Rico, among others
 - Organizing and sponsoring youth sports
 - Hiring from nearby low-income communities for our entry level traffic control positions per HUD's Section 3 guidelines and encouraging their career paths toward linemen and communications tower technicians with the support of the IBEW
- Marathon's COO for Telecommunications and IT, has been involved for the past 10 years with the Barrio Torrecilla Youth Fishing Tournament in the municipality of Loiza
- Marathon's origin companies served as first responders with our equipment and personnel, in nearby communities and municipalities, after hurricanes Georges, Irma and Maria



Management System - Quality



Marathon has strict quality assurance processes in place from the outset of every project to meet customer's expectations on time, within budget, with exceptional quality and with safety first every time.

We consult and collaborate with our clients to develop effective plans, provide high quality services and make informed decisions which will result in the best outcome.

The company is committed to employing people who are adequately trained and to ensuring that competency levels are of the highest standards. All projects undertaken are subject to regular internal and external system audits.

Every Project is subject to:

- Weekly & Monthly Progress Reporting
- Regular Site Meetings
- Regular Communications with Stakeholders
- Management & Coordination of all works
- Contract Administration and Management
- Identifying long lead time items
- Commissioning & handover of project
- Ensuring Safe Work-Place for its Employees
- Continually striving to improve safety performance

Certifications & Associations

- Our linemen and electrical workers are members of the IBEW Local 222 - Puerto Rico
- ASP Level 1&2 Crews with licensed, CPEPR member electricians
- AVETTA Certified: # 99955
- NSC First Aid, CPR and AED Course
- OSHA 1926 and 1910 (40-hour) course
- WIA [Wireless Infrastructure Association] Member in association with Gatec, Inc.
- NWSA [National Wireless Safety Alliance] - Member /Certifier in association with Gatec
- TIRAP - Participant/Provider with Gatec
- EPA Amusement Operators Safety
- Marathon will work through IBEW/Luma's PLA



Training

- **Marathon** is a partner to the Telecommunications Education Center of Puerto Rico (TEC_PR). TEC_PR is the first telecommunications education school certified by WIA and TIRAP. In joint venture with the Polytechnic University of Puerto Rico (PUPR). TEC_PR prepares tower technicians and personnel for the industry.
- TEC_PR, in conjunction with PUPR and CPEPR, is adding a lineman apprenticeship initiation program to its offering as a feeder to Marathon's on-the-job training program and the IBEW and Luma's training centers on their way to Journeyman and Foreman positions.



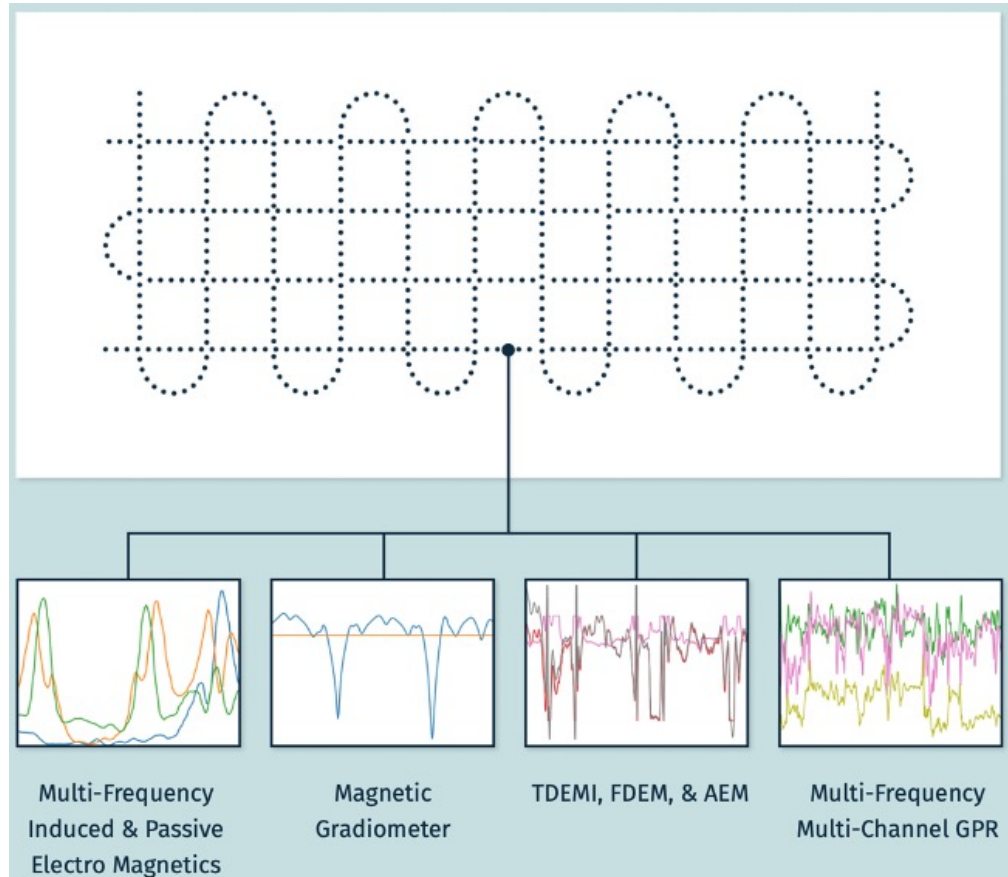
Technology Use

- At MARATHON, Innovation is one of our core values. As a result, we've been able to introduce innovative technology to our everyday work activities throughout the years that are now of standard use in our industry. Some of those are:
 - **Dashboarding**: MARATHON uses digital tools and software to create visual dashboards that display key project metrics and performance indicators in a clear and concise manner.
 - **Geo-referenced Pictures**: ArcGIS/ESRI/G-technology georeferenced data will be documented prior to starting the work and after the work ends, and for daily Project Dashboard updates.
 - **Electric Tools**: MARATHON uses electric hand tools exclusively. They provide increased speed, power, efficiency, versatility, and accuracy, while considerably reducing workers' physical strain.
 - **Document Control**: MARATHON uses digital tools and software to manage the creation, storage, distribution, and tracking of documents.
 - **Pole Framing Stands**: Marathon is the first contractor in Puerto Rico to use PoleProp™, a unique stand to lay and hold distribution poles horizontally but raised from the ground, facilitating pole framing (drilling holes and installation of crossbars, insulators, etc.) and pole grabber pickup and installation.
 - **Pole Grabber Attachments**: Marathon has acquired two Pole/Post Grabber skid-steer attachments designed for use in post frame construction, setting utility poles, setting perma-columns, etc. They provide a safe, easy way to set a pole quickly and precisely into its footing and shortens post setting time and eliminates manual handling of heavy posts/poles. They also easily position posts and poles even in sinking or soft soil. As they attach to Marathon's very compact skid-steer (Bobcat), it will be able to reach very small areas, thus increasing our efficiency in pole replacement in rural tertiary roads and dirt roads as well as in very congested urban areas.



Innovation

- For 2024, Marathon will introduce innovation in the Underground Exploration field through the use and licensing of the Exodigo proprietary platform to collect geophysical data at scale using multiple sensors across multiple fields of physics and fusing the signals with artificial intelligence to create extremely accurate subsurface maps with up to 1 centimeter sampling.
- Marathon is in discussions with Northern Territory Utility Power and Water Corporation in Australia to acquire and adapt for 2025 their “Crocodile Clamp Fixtures” for fixing pole bases without replacing the pole or needing a power outage. The fixtures are actually pole cradles of five meters long, with largescale clamps that hold steel poles in position, with all wires, insulation, and hardware, energized, while works are undertaken to re-make corroded pole bases on the spot. Each cradle, which has the capacity to restrain up to 32 tons, will work on poles of any height, size or pole top arrangement
- For 2026 Marathon will add an electric backhoe digger and will change our light duty (pick-up/van) truck fleet to EV.



Recent Projects

Emergency Restoration - Hurricane Fiona - Sept. - Oct. 2022

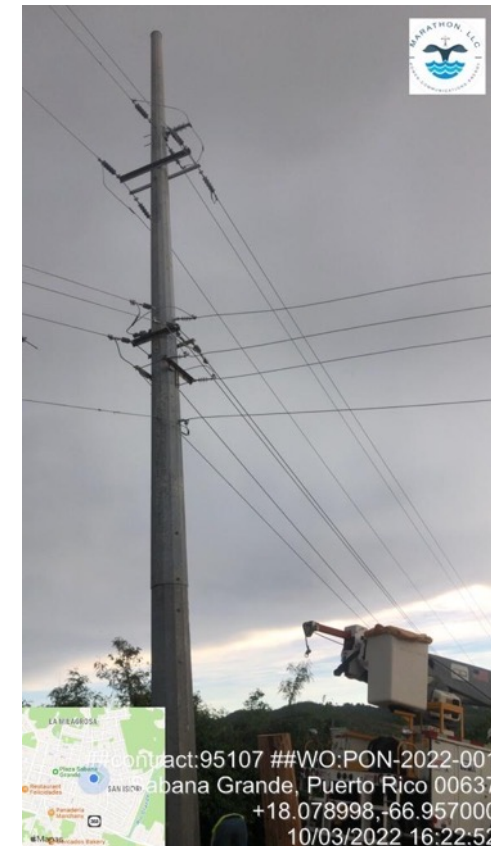
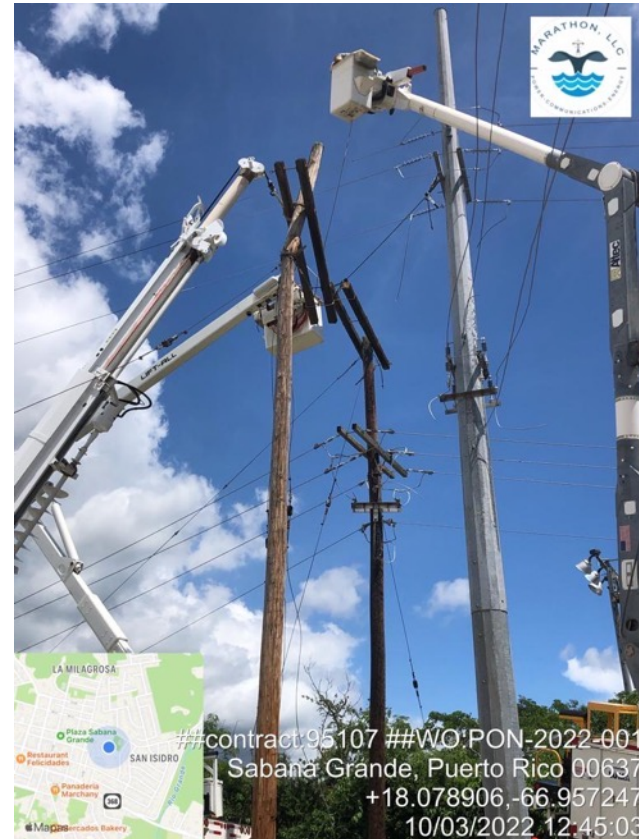
- Emergency Restoration for LUMA for Hurricane FIONA - Marathon provided over US\$6 million in electrical infrastructure restoration in the municipalities of Guayama, Ponce, Yauco, Sabana Grande, Guánica, and Guayanilla

Damaged 38 kV wood structure:

Install new metal pole.

Transfer 38 kV Line 1500 and 4 kV underbuilt feeder to new pole.

Remove wood structure.

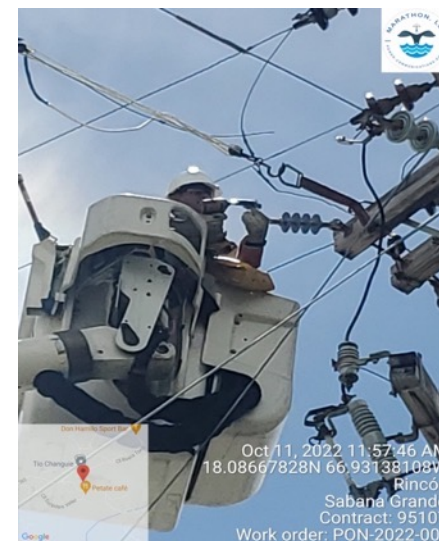
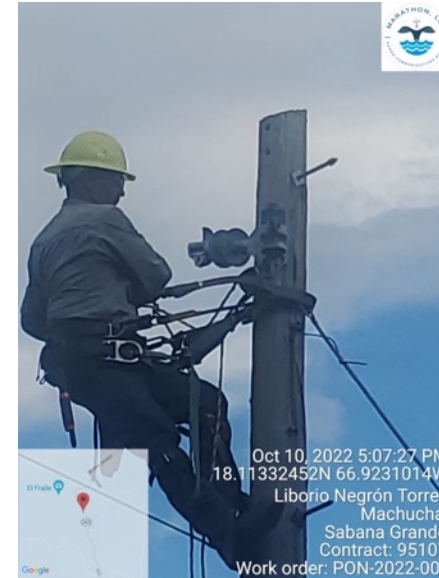


Work done!!



Recent Projects

Emergency Restoration - Hurricane Fiona



Recent Projects

Distribution Streetlights Repairs - Nov. 22 - May 23

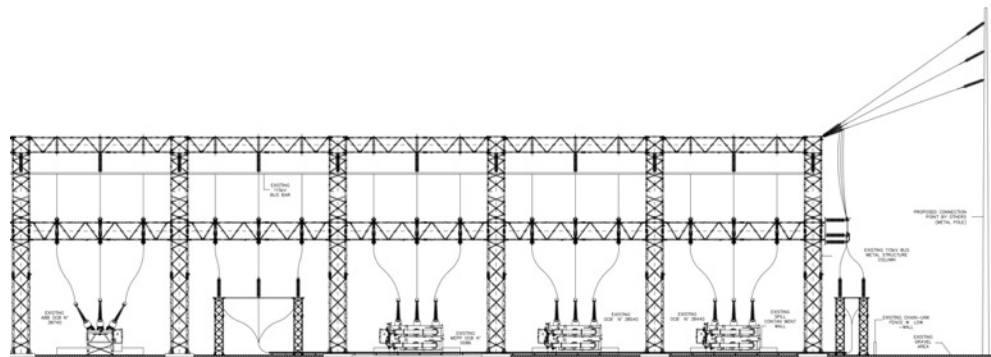
- Marathon has successfully completed over \$21 million in streetlights repairs for LUMA under contract 94247, including pole removal/installations with secondary circuits.



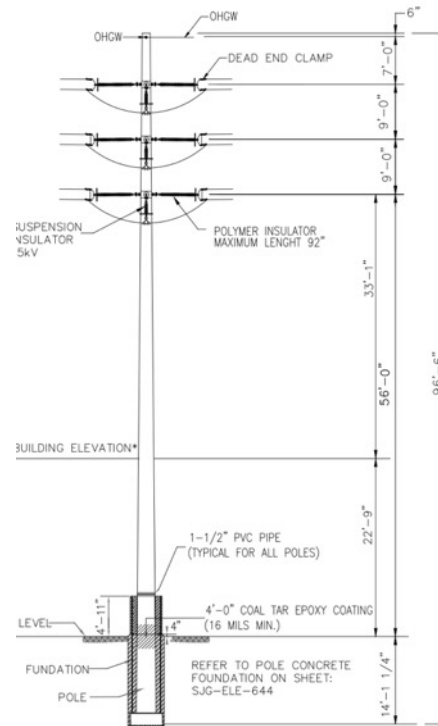
Recent Projects

Emergency 115kV GSU Switchyard and T-Line - July - Sept. 23

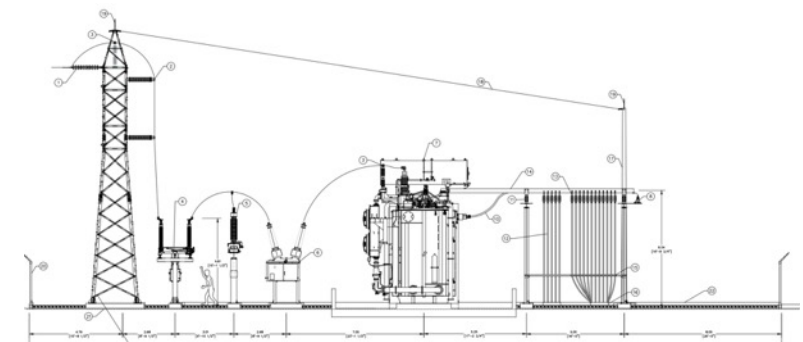
- Marathon is successfully building a new GSU switchyard with a new 115kV aerial line, including 115kV underground transitions, for interconnection to SJSP of the FEMA funded 250 MW emergency combustion turbines. Work is for the US Corps of Engineers under emergency contract from RG Engineering, Inc.



SJSP 115kV Brkr + 1/2 115 kV Switchyard with
2 - 115kV bare to cable transitions (potheads)



115 kV T-Line with 2x1192 ACSR

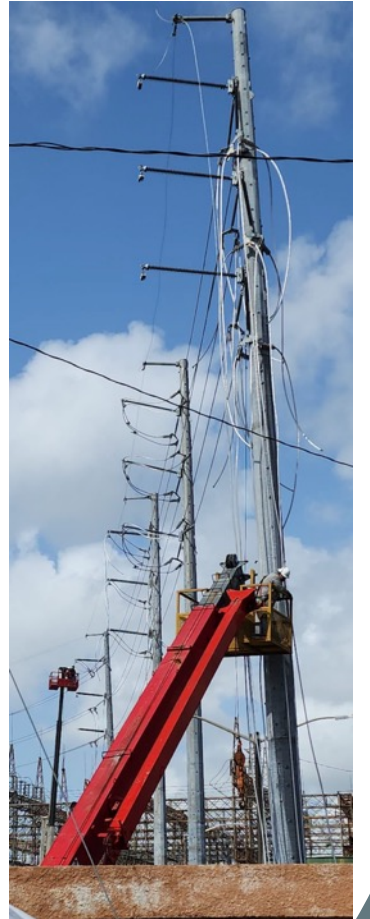
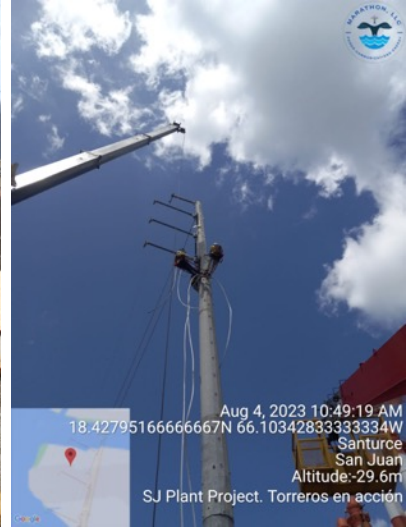


13.8/115 kV GSU Switchyard for collection
of USCOE 312.5 MVA Emergency
Turbine Generators



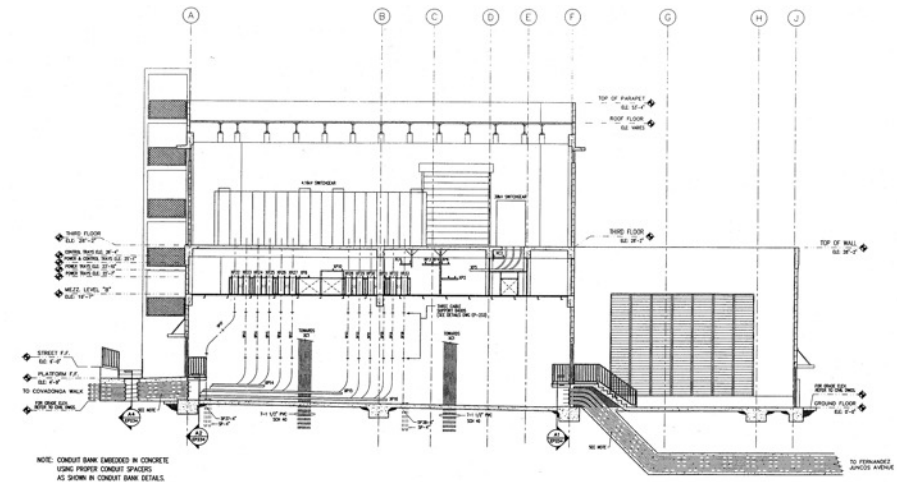
Recent Projects

Emergency 115kV GSU Switchyard and T-Line



Cumulative Representative Projects

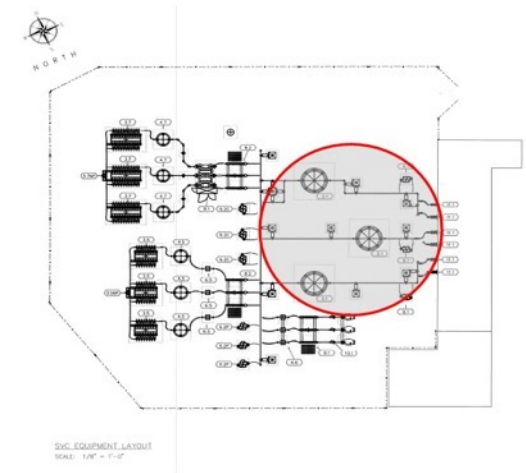
| Representative Projects | | |
|-------------------------|---|-----------|
| 1 | PREPA - Covadonga GIS – EPC 49 circuit breaker turn-key Gas Insulated Substation including the underground of ten 4.16kV feeders, ten 13.2kV feeders and four 38kV lines – Completed 2003 | US\$15 M |
| 2 | PREPA - Hato Rey GIS – EPC 20 circuit breaker turn-key Gas Insulated Substation including the underground of ten 13.2kV feeders and six 38kV lines – Completed 1998 | US\$8.3 M |
| 3 | PREPA/FEMA - 115 kV 30 mile Metropolitan Underground Transmission Line Loop – Construction Management, Project Inspection, Document Control for all six phases of the project to completion in 2008. FEMA Funded. | US\$140 M |
| 4 | PREPA/FEMA - Underground feeder 3602-03 Cayey-Guavate to serve Doppler Radar – Project Management, Inspection, and Document Ctrl. | US\$1.5 M |
| 5 | PREPA - L3800 Cidra Sabanera to Mogotes Substation, Revamping 38kV conductor to 1192.4MCM; distance-14 km in rural roads and Cross-Country road traffic conditions | US\$8.4 M |
| 7 | PREPA - Hurricane María Restoration; Debris and Vegetation Management, New Pole installation, wiring of transmission and distribution feeders – Caguas Region | US\$1.6 M |
| 8 | PREPA - L3000 Juncos TC to Amgen to Naguabo Substation- New line construction, 1192.4 MCM cable; distance-4.7 km; heavy traffic on road PR#31 | US\$2.9 M |



Cumulative Representative Projects



| Representative Projects | | |
|-------------------------|---|-----------|
| 9 | PREPA - Feeder 3205-07 Bo. Ceiba Norte, Juncos to Naguabo, revamping 13.2kV conductor to 556.4 MCM; distance – 4.7 km; heavy traffic on road PR#31 | US\$2.4 M |
| 10 | PREPA - Juncos T.C. to Jansen L19400 115kV - New line construction 1192.4 MCM; Distance- 7.5 km; on road PR#189; rural road with heavy traffic | US\$6.5 M |
| 11 | PREPA - Feeder 3006-05 revamping existing conductor to spacer 556.4 MCM; PR#1 Caguas TC to Buen Pastor; 11.8km | US\$6.1 M |
| 12 | PREPA - 38kV L3000 revamping existing conductor to 1192.4 MCM; PR#1 Caguas TC to Buen Pastor Substation; distance-11.8km; heavy traffic | US\$7.1 M |
| 13 | PREPA - Feeder 3205-09 13.2 kV conductor revamping to spacer 556.4 MCM ; PR#198 Juncos to Las Piedras; Distance-5.7 km; rural road with heavy traffic | US\$3.0 M |
| 14 | PREPA - 38kV L5300 revamping to 556.4 MCM; PR#198 Juncos TC to Emilio Huyke Stadium ; distance-6km; rural road with heavy traffic | US\$3.7 M |
| 15 | PREPA - Vieques Power Plant – 6 MW, baseload Turnkey Power Plant with 38kV URD line– Fast Track EPC – Completed: 2004 | US\$7.5 M |
| 16 | PREPA - Bayamón Static Var Compensator – Fast track EPC for reactive support after Palo Seco Power Plant fire in 2007 | US\$8.0 M |
| 17 | PREPA - 38kV L9300 conductor revamping to 1192.4 MCM; Sub Villa Castro Caguas to San Lorenzo; distance-6.4km; heavy traffic roads and cross-country | US\$4.0 M |



Cumulative Representative Projects



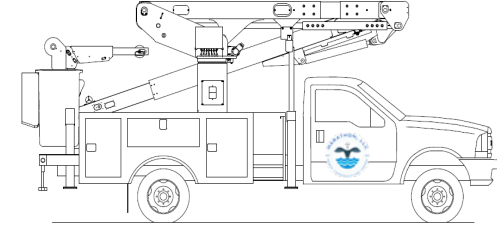
Representative Projects

| | | |
|----|---|------------|
| 18 | PRTC / Claro - Generator Installation - 750 KVA at Roosevelt 1513, San Juan PR | US\$200 K |
| 19 | PRTC / Claro - El Yunque Tower Upgrade | US\$600 K |
| 20 | American Tower Company - Tower Construction at 3 Calles, Bayamón | US\$180 K |
| 21 | PRTC/Claro - Installation of DC Power Rectifiers 3,000 amp | US\$30 K |
| 22 | PRTC/Claro – Structural repairs to the Monte Gregorio Tower, Utuado PR | US\$50 K |
| 23 | AWC – Construction of 70 New Tower Sites at multiple locations | US\$10 M |
| 24 | PRTC/Claro – Construction of 250 Site Facilities | US\$3.0 M |
| 25 | PREPA – Reconstruction/Relocation of 38kV lines and Distribution feeders at the Rio Piedras and Canovanas districts | US\$1.31 M |
| 26 | Public Housing Administration – Villas del Rio Public Housing electrical reconstruction | US\$1.25 M |

Additional references
available upon request



Vehicles and Equipment



| DESCRIPTION | MODELS | QTY |
|-----------------------|--------------------------|----------------------|
| TEREX | 35 TON, 160 FT CRANE | 1 |
| 2022 FORD F-550 | ART. 44' BUCKET TRUCKS | 6 ARRIVE 01/22 |
| 2006 INTERNATIONAL | BUCKET TRUCK 57' | 2 |
| 1993 FORD F-800 | BUCKET TRUCK 57' | 1 |
| 1998 FORD F-900 | BUCKET TRUCK 80' | 1 |
| 2006 INTERNATIONAL | DIGGER CRANE | 1 |
| 2002 INTERNATIONAL | DIGGER CRANE | 1 |
| 1997 FORD F-800 | DIGGER CRANE | 1 |
| 1998 FORD F-800 | BOOM TRUCK CRANE | 1 |
| 2000 FORD F-700 | DUMP TRUCK | 2 |
| 2004 INTERNATIONAL | FLAT BED TOW TRUCK DT466 | 1 |
| 1993 MACK | TRACTOR TRAILER | 1 |
| 1990 THEURER ATLANTIC | TRAILER | 1 |
| 2010 FORD F-550 | STAKEBED/UTILITY TRUCK | 1 |
| 2005 FORD F-450 | STAKEBED/UTILITY TRUCK | 1 |
| 2012 FORD E-350 | SUPER ECONOLINE VAN | 1 |
| 2011 FORD F-250 | SERVICE BODY PICK-UP | 1 |
| 2002 FORD F-250 | SUPER DUTY PICK-UP | 3 |
| 2016 DODGE RAM 2500 | PICK-UP | 1 |
| 2012 CHEVY 2500 | PICK-UP- SILVERADO | 2 |
| 2015 FORD F-150 | PICK-UP | 4 |
| 2012 DODGE RAM 1500 | PICK-UP | 2 |
| 2003 TOYOTA TACOMA | PICK-UP | 3 |
| FORD RANGER XLT | PICK-UP | 1 |
| 2000 CHEVROLET | ASTRO VAN | 1 |

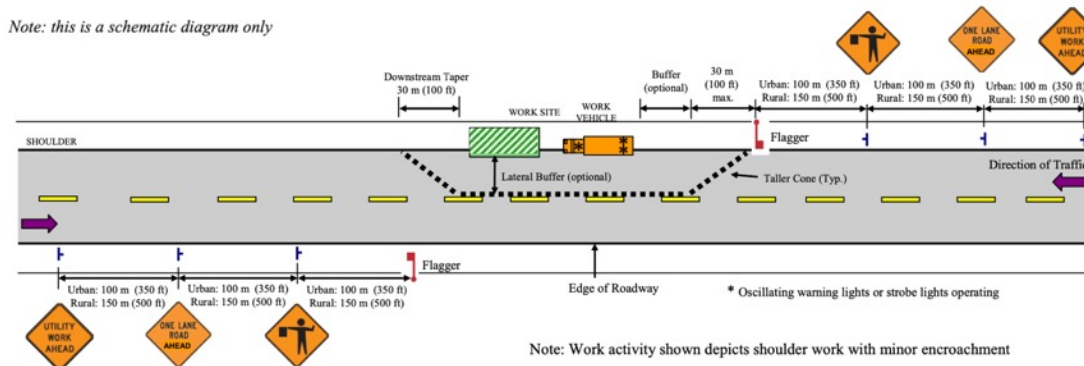
| DESCRIPTION | QUANTITY |
|---------------------------------|----------|
| CHAINSAW | 4 |
| PRUNER | 2 |
| BLOWER | 2 |
| BRUSH CHIPPER VERMEER BC700 XL | 1 |
| BRUSH CHIPPER VERMEER BC 1500XL | 1 |
| 4,800 POUNDS GENERATOR | 1 |
| COMPRESSORS | 3 |
| MAKITA ELECTRIC CHIPPING HAMMER | 5 |
| DRILLS | 5 |
| WATER SUCTION PUMP | 2 |
| DIESEL SUCTION PUMP | 1 |
| CONCRETE MIX MACHINE | 1 |
| AIR CHIPPING HAMMER COSCO | 4 |
| 45 FEET WAREHOUSE TRAILERS | 7 |
| 40 FEET OFFICE TRAILER | 1 |
| JUMPING JACK TAMPER | 3 |
| NEW HOLLAND 3010 FARM TRACTOR | 1 |
| TORO Z MASTER 360 | 1 |
| DIGGER 4 x 4 LB-110 | 2 |
| LOW BOY 40 TONS | 1 |
| LOW BED 10 TONS | 1 |
| BOBCAT - KUBOTA | 2 |
| KOMATSU FINGER | 1 |

Additional Equipment



| DESCRIPTION | QUANTITY PER CREW |
|--|-------------------|
| 36"x36" TRAFFIC SIGNS | 8 |
| 24"x24" TRAFFIC SIGN | 2 |
| SIGN ROLL-UP STAND | 6 |
| CONES | 50 |
| FLAGS | 12 |
| REFLECTIVE DRUMS | 10 |
| BARRICADE LIGHTS FOR DRUMS – 7" | 2 |
| PPE KIT (HELMET, BOOTS, VESTS, WHISTLES) | 3 |
| SHORT-WAVE COMMS EQUIP – PAIR | 1 |
| AIR HORN | 3 |
| AUTOMATIC DEFIBRILATOR | 1 |
| TRIMMER | 1 |
| MACHETE | 2 |
| SAW | 2 |

Note: this is a schematic diagram only



Contact us:

info@marathonpr.net

PO Box 771

Gurabo, PR 00778

www.marathonpr.net

787.234.3185

